

# LOVE A LEVELS

*"We really enjoyed the whole experience of completing our A Levels at the College. They helped us to understand more about life in general and become self-motivated towards achieving our goals."*

*Joe Edwards and Natasha Ratcliffe*





## THE A LEVEL PROGRAMME

The A Level courses we offer at the College are as follows:

- The standard two-year A Level course for full-time students. Students may choose from the general menu of subjects
- The Performance and Media Package (see page 90)
- The Drama Package (see page 89)
- A Levels (2 years) - The Standard Package:

The College is pleased to offer a wide range of both Advanced Subsidiary (AS) and A Level subjects. The AS Level represents half a full A Level. The second part of the A Level is called A2. AS and A2 each make up 50% of the full A Level.

During your interview and induction you will receive advice from staff regarding suitable subject combinations in light of your plans for higher education and/or career ambitions and incoming GCSE results.

The basic entry requirements for the standard two-year A Level programme are at least five GCSE passes at grade C or above or equivalent qualifications including both English (Language) and Mathematics. Some packages and subjects require specific additional GCSE passes at grade C or above.

You will meet weekly with your personal tutor who will support you as you plan and monitor your work and performance. These weekly meetings are a very important part of your learning programme.

We are part of a link partnership with South Warwickshire schools in order to provide maximum choice for our students. Thus, a wide range of subjects can be accessed either here or at one of our partner schools.

## AS Level Subject

### Science OCR

This subject extends GCSE Science and contains elements of Biology, Chemistry and Physics, as well as Earth Science and Environmental Science. The specification is purpose-built for those candidates who wish to continue with a broad study of science beyond GCSE, but who choose not to specialise in the separate science disciplines.

## GATEWAY TO LEVEL 3

If you sat your GCSEs and the results were not what you expected we can offer you the chance to join our Gateway to Level 3 programme. You could join our one-year GCSE programme, choosing from a variety of subjects and including some which may not have been available at school, such as Psychology, Media or Photography.

All GCSE applicants will be given individual guidance on the best options to follow. As well as academic study, students will cover a range of activities designed to engage, inspire and promote good study and interpersonal skills. Tutorial sessions will form part of the programme of study.

### Subjects available include:

- Mathematics
- English
- Human Physiology and Health
- Psychology
- Media
- Photography
- Humanities
- Level 2 Extended Project

From these subjects you will select four plus the Level 2 Extended Project qualification. Mathematics, English and Human Physiology and Health will be a compulsory part of the programme if you did not gain a grade C at GCSE.

### Entry Requirements:

2 GCSEs at grade C



## Accounting AQA

Accounting affects everyone in their daily lives but it is often considered an elusive art. With a greater number of people becoming involved in business, the need to understand the 'language of business' becomes increasingly important. The areas covered include: The Accounting Information System; Determination of Income; Introduction to Accounting for Management and Decision Making; Further Aspects of Financial Accounting; Published Accounts of Limited Companies and Accounting Standards; and Further Aspects of Accounting for Management and Decision Making. A grade B in GCSE Mathematics is required.

## Art and Design AQA

This is a stimulating and demanding subject that combines practical work with academic skills. Themes are set or chosen for practical coursework over a one or two-year period, based on 2D and 3D visual language. Students should have successfully studied one of the art forms (art, graphics, textiles, photography, etc.) to GCSE at grade C or above. You should have enthusiasm, energy and a real passion for art. Emphasis is placed on drawing skills, examining the work of other artists and producing imagery in a variety of media and techniques. The syllabus revolves around 2D and 3D work and on developing personal expression and style. During the second year (A2 Level) you will be expected to develop a deeper understanding of a topic and to broaden your historical and contemporary references.

## Biology AQA

The modules of study in this A Level Science and have been designed to interface with higher education courses. You will gain an appreciation and understanding of the fundamental biological principles through a scientific study of a representative selection of living organisms. You will also develop a scientific approach to the solving of problems in the context of planning and conducting investigations. A Level Biology is an appropriate subject to study if you are pursuing a career such as Biotechnology,

Biochemistry, Environmental Health, Food Science, Microbiology, Medicine and Medical Sciences, Nursing, Nutrition, Occupational Therapy, Pharmacy, Physiotherapy and Veterinary Science. AS Level Biology is of value if you are wishing to broaden your curriculum and further develop your understanding of scientific principles and how biology influences everyday lives in many ways. GCSE at BB in dual award Science or B in Biology is required, together with B in Mathematics GCSE, higher tier.



## Business Studies AQA

This A Level is ideal if you have a strong interest in Business Studies and want to learn how a business is organised, operates, plans and makes its decisions. You will study: Marketing; Accounting and Finance; People and Operations Management; External Influences; and Objectives and Strategy.

Business Studies combines well with subjects such as Economics, Law and Accounting. Business Studies is held in high regard by both the university sector and employers and will help you gain a valuable insight into the modern business world. A grade B in GCSE Mathematics is required.

## Dance AQA

A Level Dance is achieved through a rigorous programme of theoretical and practical studies. You will study two modules for the AS Level: Understanding Dance and Choreography and Performance. For a full A Level you will study two further modules in the second year: Group Choreography (practical) and

Group Choreography and Solo Performance. It should be noted that both AS and A2 Levels require you to write essays. The programme of study will involve theoretical lectures, research and written homework to complement practical study. An audition will be held during induction.

## Drama Package

The Drama Package is a demanding and stimulating practical and academic course. You will be required to study Drama and Theatre Studies at AS and A2 Level, English Literature at AS Level, plus two additional subjects of your choice at AS Level. You have the opportunity to develop research, analysis and theory through your choice of subjects at AS and A2 Levels.

We also develop acting, devising, directing and technical theatre skills through practical experience. The unique and successful A Level Drama Package supports subjects that complement each other and is a nationally-recognised course which demands high standards, intensive input and creates challenging activities. Please see page 89 for further details.



## English Language AQA B

English Language examines the history, development and current uses of English, not just in this country but also around the world. It requires you to develop your powers of analysis of both the spoken and written language and further develop the standard of your own written English. This A Level subject fits well with many combinations of subjects and

is appropriate for any future career aim. It is looked upon well by employers and higher education institutions alike. You will study two modules for the AS Level: Categorising Texts and Creating Texts. For a full A Level you will study two further modules: Developing Language and Investigating Language.

## English Language and Literature AQA A

The combined English Language and Literature course provides students with a valuable opportunity to explore English from both linguistic and analytical perspectives. The course provides an exploration of literary texts and invites students to observe the effects of language in social contexts. The course requires that students also study the spoken language. Students will have the opportunity to create their own texts and

thus build upon writing skills which have already been acquired at GCSE level. Both the Language and Literature elements of the course will support the development of writing skills. You will study two modules for the AS Level: Introduction to Language and Literature Study and Themes in Language and Literature. For the full A Level you will study two further units: Talk in Life and Literature and Text Transformation.

## English Literature OCR

The specification of this course offers a rewarding exploration of literature. It is designed to encourage wide reading and detailed research within the field of literary studies. English Literature is recognised as a demanding academic subject. Successful completion of the AS Level will demonstrate your advanced reading, analysis and response to texts. Studying for the full A Level will provide further development and prepare you for higher academic study and many careers. You will study two modules for the AS Level: Poetry and Prose (1800-1945) for examination and Literature post-1900 for coursework. For the full A Level you will study two further units: Drama and Poetry pre-1800 for examination and Texts in Time for coursework.

## Geography AQA

Geography is a spatial, forward-looking subject with a strong people-environment theme. It provides students with a greater awareness of the world, the problems it faces and the possible solutions. Geography uses scientific methods, statistical analysis and fieldwork to examine the effects that the environment has on man and the effects that man has on his environment. You will study two modules for the AS Level (year one): Physical Geography and Human Geography and Applied Geography. For a full A Level you will study two further units which include: Contemporary Geographical Issues and Geography Fieldwork Investigation. A grade C or above in GCSE English is required to study this subject.

## Information and Communication Technology WJEC

Information and Communication Technology (ICT) is concerned with the uses and the effects that ICT has on society and organisations. ICT is a highly practical subject with 40% of the course assessed through practical coursework. You will study two modules for the AS Level: Information Systems and Presenting Information. For the full A Level you will study a further two modules: Use and Impact of ICT and Relational Database Project. Assessment for the AS and A2 is by examination and project work completed at the end of each year. The course does not assume any prior knowledge of ICT.

## Government and Politics Edexcel

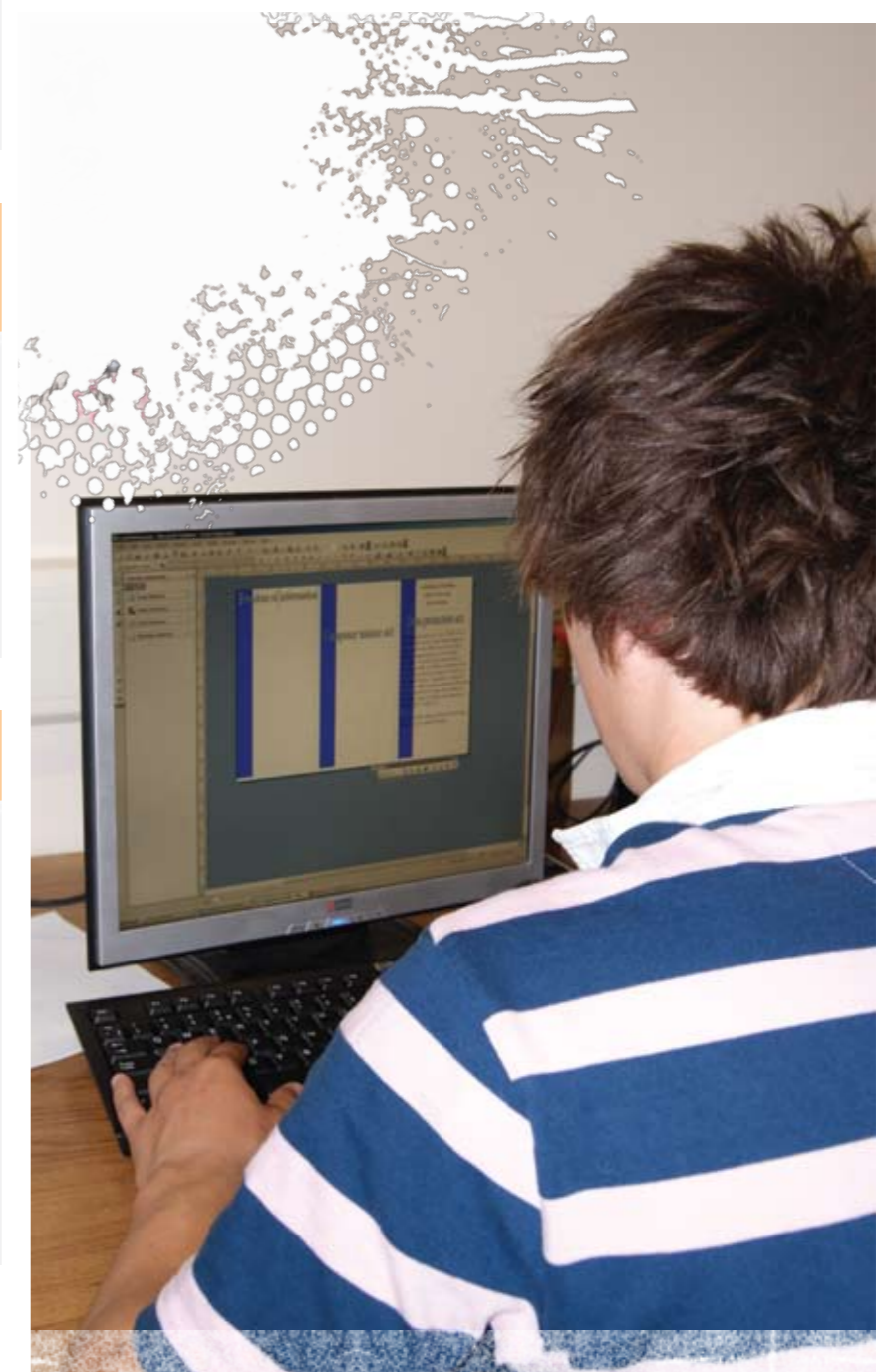
Politics, in one form or another, shapes every aspect of our lives today. From our education, to our work, to our social welfare – even what we eat! Everything has a political issue involved. You will study two modules for the AS Level (year one): People and Politics & Governing the UK. For a full A Level you will study two further modules: Introducing Political Ideologies and Other Ideological Traditions. A grade C or above in GCSE English is required to study this subject.

## History AQA

What factors have shaped the world we live in today? How is the present affected by the past? The History A Level offers an exciting range of options in early modern and modern history that cover major developments in the 17th and 20th centuries. You will study two modules at AS Level (year one): Britain, 1603-1642 and Anti-Semitism, Hitler and the German People, 1919-1945. For a full A Level you will study Civil Rights in the USA 1865-1992 and two independent coursework modules. This subject is appropriate for many future career aims and is well regarded by employers and higher education institutions alike. A grade C or above in GCSE English is required to study this subject.

## Film Studies WJEC

Film Studies is a demanding academic and practical subject. AS Level Film Studies builds upon your own personal knowledge of cinema, examining the role of the audience and what attracts the audience to view particular films. Is it the content, the star, the director or are there other factors that influence audiences? A2 Level Film Studies builds upon the academic and practical skills learned in the AS Level. The study of film will enable you to gain a greater understanding of cinema as both a commercial product and an art form.





## Media Studies OCR

The mass media is a vital element of life in Britain today. Not only does it provide us with information about the world in which we live, but also with much of our entertainment. A critical understanding of how the mass media works can help us develop a valuable insight into our culture. A Level Media Studies enables you to gain this understanding through both practical and theoretical methods. The course is wide-ranging and includes the detailed study of media products such as television programmes, films or newspapers. You will also explore key current debates in the media, such as possible links between the media and violence in society, or the future of broadcasting. Our excellent technical facilities enable you to put into practice some of the theories you have learnt.



## Performance and Media Package

The A Level Performance and Media Package combines two applied A Levels. The course design enables students to develop broad vocational skills, knowledge and understanding based on the practical needs and concerns of the performing arts and media industries. Although the course contains a theoretical element, the main focus is on practical activity.

The A Level Performance and Media Package combines four A Levels that you will take over two years. These are:

- Applied A Level - Performing Arts A Level
- Applied A Level - Media: Communication and Production A Level
- Two additional AS Level subjects

Please see page 90 for further details.

## Philosophy of Religion and Ethics OCR

This course aims to develop an interest and enthusiasm for the philosophy of religion and ethics. It will encourage you to develop a wide range of transferable skills which will be suited to a variety of careers such as: Law, Journalism, Medicine, Teaching, Social Work and many more. You will use an enquiring, critical and empathetic approach to the study of philosophy of religion and ethics. You will study two modules for the AS Level (year one): Philosophy of Religion and Religious Ethics. For the full A Level you will study two further units: Philosophy of Religion and Religious Ethics. It is not essential to have studied Religious Education Studies for GCSE but it would provide a clear indication of interest to meet the demands of the course.

## Photography AQA

Photography is a stimulating and demanding subject that combines practical, technical and academic skills. You will be able to develop a personal approach to the process of researching, developing ideas and making photographic images. The course will give you the opportunity to explore practical photography by developing photographic skills and techniques using both traditional and digital equipment. You will carry out research studies that explore genre, style and tradition in photography. The areas studied include: Documentary Photography, Landscape and other areas. Photography complements a range of subjects.

## Psychology OCR

The OCR syllabus has a more practical approach to learning psychology because students will be exploring everyday experiences and applying psychological explanations to them. You will develop an analytical and objective approach to explaining the mind, behaviour and experiences of individuals.

The AS Level will introduce students to issues that psychologists investigate and which provide a good foundation for those wishing to continue their studies at A2 Level for an additional one year. At A2 Level you will study Crime and Psychology together with Sport Psychology.



## Sociology AQA

Sociology is the systematic study of people in groups and societies. The syllabus focuses mainly on modern western industrial societies and especially on modern Britain. We consider the explanations offered by sociologists for the way that people behave and we look at the research evidence on which these explanations are based. This subject will lead to any graduate career.

Possible options include: Advertising, Marketing, PR, Business and IT, Social Work and Occupational Therapy, Teaching, Law and Criminology. Topics will include: Families and Households, Education, Sociological Methods, Beliefs in Society and Crime and Deviance. Grade C or above in GCSE English is required to study this subject.

## Law AQA

This is a unique opportunity to study a subject leading directly to a legal career. The combination of politics and law will be attractive to students interested in careers in government and the legal system. Alternatively, law is supportive to those interested in Business, Criminology, Psychology etc. The study of Law at A Level combines well with a range of other subjects: Business Studies, History, Politics, Psychology and Sociology are examples. It provides an excellent opportunity to prepare for studying law at university. We offer a lively and stimulating course of study using a variety of teaching methods including conferences, debates, videos, case studies as well as lectures and seminars. The course involves a study of the English legal system, with particular research into criminal and civil law. Subject content includes: a study of Parliament, the courts, judges and lawyers. Criminal offences including wounding, inflicting grievous bodily harm and assault and battery are studied in-depth. Murder, manslaughter, insanity and other defences form part of the A2 specification.

## Mathematics Edexcel

Mathematics is a subject that combines well with any A Level and is appropriate for many future career paths. It is well regarded by employers and higher education institutions alike and the course aims to show how mathematics is relevant to the content of other subject areas. The A Level course develops the skills of mathematical argument and logical reasoning. Specific subjects such as co-ordinate geometry, graph sketching, investigating functions and number patterns are introduced and their inter-relationships are explored. You will study three modules in each of the A Level years. These comprise two compulsory core modules and an application module. The application module will be Decision Maths in the AS year and there is usually a choice of Statistics or Mechanics offered in the A2 year, depending on the requirements of the students. There is an opportunity to study AS Further Mathematics in the A2 year. This introduces new topics such as matrix algebra and complex numbers. It is a very useful additional qualification for students seeking to pursue Mathematics or Sciences at university. GCSE Mathematics at grades A\* to B is required in order to take this subject.



# LOVE A LEVELS



## TO JOIN THE A LEVEL PROGRAMME

You will need at least five GCSE passes at grade C or above or equivalent qualifications, including Mathematics and English Language. Some A Level subjects do, however, require a pass at GCSE as an entry qualification at a specific level or in a specific subject or subjects and details of these are indicated on the relevant A Level information sheet or at interview. In some cases, these entry requirements may be waived for mature students. A satisfactory reference is required before the College will confirm your place on the A Level programme. In addition, to join the "Performance and Media Package" or the "Drama Package", students will be required to successfully audition. Full details about the structure and requirements of these auditions will be given at interview and by invitation letter.

### Assessment:

Methods of assessment vary widely from subject to subject. Full details are also given on the relevant A Level information sheets available on request or visit [www.stratford.ac.uk](http://www.stratford.ac.uk) for more information.

### Career Opportunities:

AS Level and A Level qualifications give you access to degree courses at universities and other higher education institutions and open up a wide range of career prospects.

### A Level Part-time Courses:

There are opportunities to study A Level programmes on a part-time basis. Please contact the Learning Advice Centre on **01789 296696** if you would like further details.

### To Join the A Level Programme:

We interview all applicants in order to discuss your aspirations and give you further information about the College and the course. You will be given a tour of the College as part of the interview process. During this tour you will be able to ask current students about life at Stratford-upon-Avon College. A satisfactory reference is required before the College will confirm your place on the A Level programme.

