

one step ahead in  
**apprenticeships**



**Call 01789 297335 for information about:**

- Business Administration
- Childcare
- Contact Centre
- Customer Service
- Driving Goods Vehicles
- Health and Social Care
- Hospitality and Catering
- ITQ
- Management
- Retail
- Storage and Warehousing

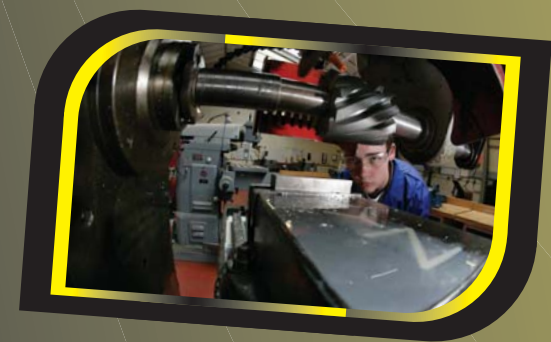
**Call 01789 261123 for information about:**

- Bricklaying
- Carpentry
- Electrical Installation
- Engineering - Mechanical and Electrical

Email with an enquiry to [sbs@stratford.ac.uk](mailto:sbs@stratford.ac.uk)

[www.sbs.stratford.ac.uk](http://www.sbs.stratford.ac.uk)

one step ahead in  
**apprenticeships**



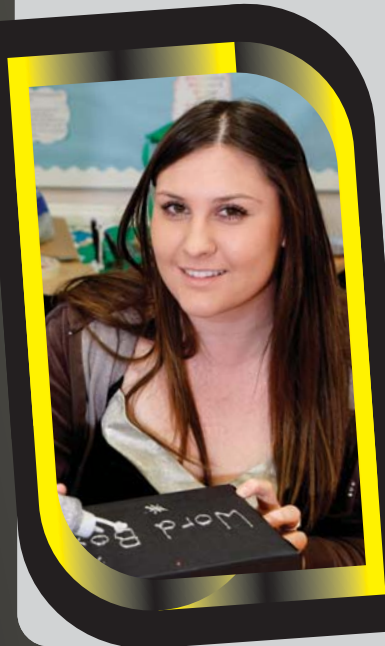
# one step ahead in apprenticeships

## Apprenticeships

Apprenticeships are designed for young people aged 16 - 24 who wish to combine working and earning whilst learning a professional skill. Our **FREE** training programmes are designed to meet industry standards. All apprenticeships lead to a range of qualifications which are recognised by all employers and will be the basis of your career.

## Apprenticeships are available in the following areas:

- Bricklaying
- Business Administration
- Carpentry
- Childcare
- Contact Centre
- Customer Service
- Driving Goods Vehicles
- Electrical Installation
- Engineering - Mechanical and Electrical
- Health and Social Care
- Hospitality and Catering
- ITQ
- Management
- Retail
- Storage and Warehousing



## What is an Apprenticeship?

An apprenticeship is a **FREE** training programme designed by industry to meet its needs for a competent workforce. Apprentices follow a framework of qualifications starting at Level 2 qualifications. As an Apprentice you will be a full employee of a company and receive a salary whilst studying. SBS works with Connexions and local employers to help you find suitable employment and will continue to support you throughout your training.

## Facilities

SBS is part of Stratford-upon-Avon College and therefore all apprentices can access the facilities at the college including: the Learning Resource Centre, advice and guidance, additional learning support and membership of the student association. Apprentices will enjoy benefits of fully equipped catering, electrical, engineering and construction training areas giving 'hands on' experience.

